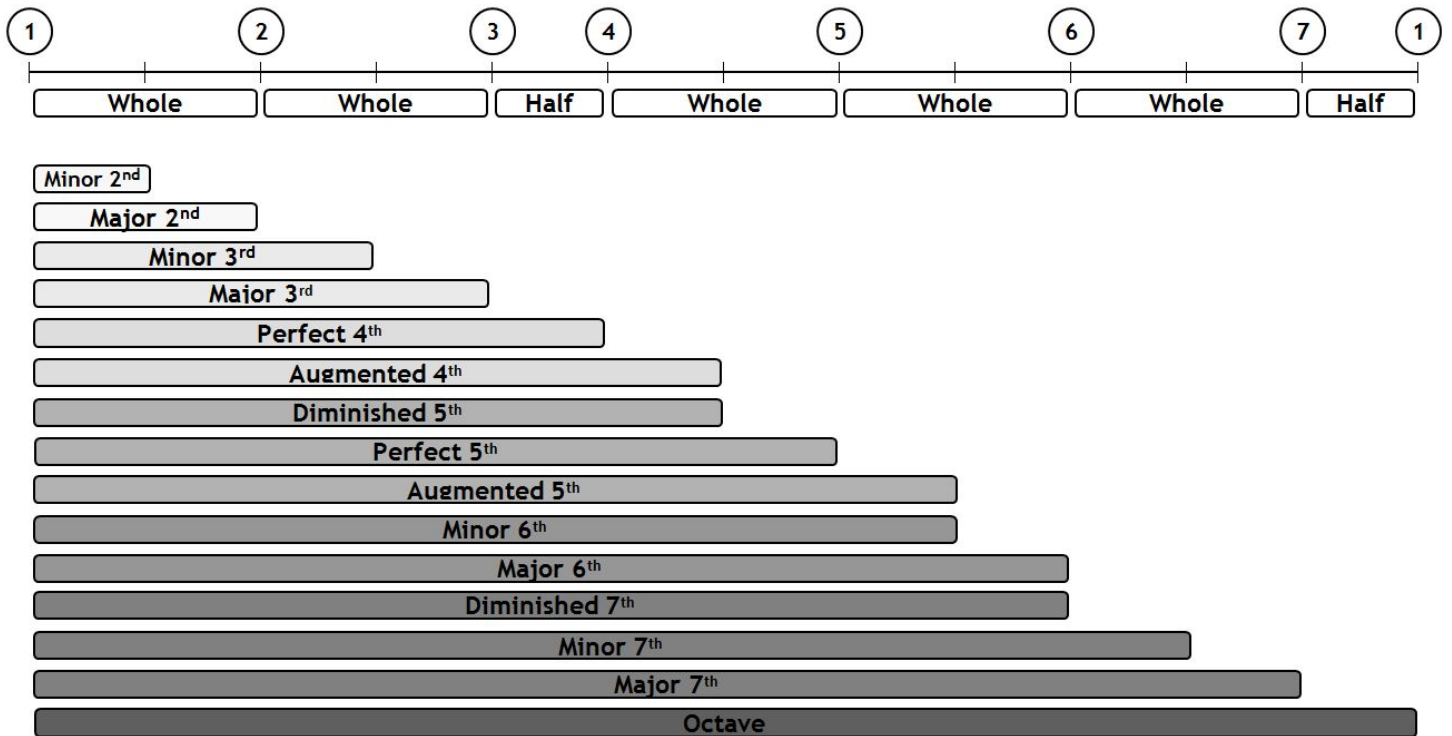


Interval Comparison Chart

An *interval* is the distance between two notes. Intervals are named for their relationship to the major scale.

Scale degrees are the notes of a scale expressed in numeric values. Scale degree 1 (the tonic) is the first note of the scale, scale degree 2 is the second, and so on.

The Major Scale, Scale Degrees, and Common Intervals



Interval terms and definitions

Major: Applies only to the 2nd, 3rd, 6th, and 7th. Major intervals are the distance from the tonic to the same scale degree of the major scale, so a major 3rd spans from the tonic to scale degree 3.

Minor: Applies only to the 2nd, 3rd, 6th, and 7th. Minor intervals are a half step smaller than their major counterparts, so a minor 3rd is a half step smaller than a major 3rd.

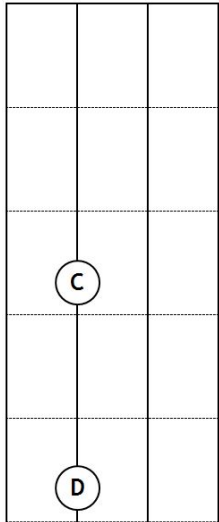
Perfect: Applies only to the 4th, 5th, and octave. Perfect intervals are the distance from the tonic to the same scale degree of the major scale, so a perfect 5th spans from the tonic to scale degree 5.

Augmented: Any interval can be augmented, but is most commonly seen in 4ths and 5ths. An augmented interval is a half step larger than its major or perfect counterpart.

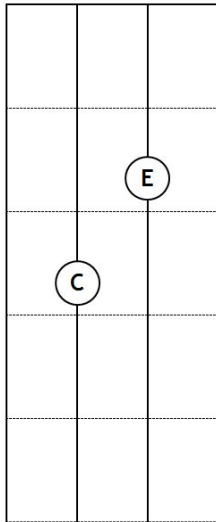
Diminished: Any interval can be diminished, but is most commonly seen in 5ths and 7ths. A diminished interval is a half step smaller than its minor or perfect counterpart, so a diminished 5th is a half step smaller than a perfect 5th and a diminished 7th is a half step smaller than a minor 7th.

Intervals - Major and Perfect

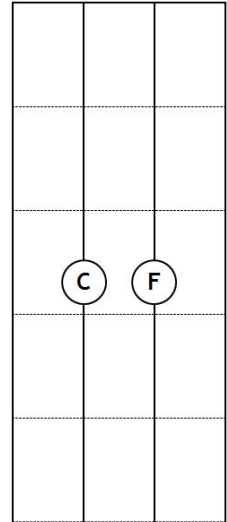
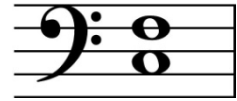
Major 2nd



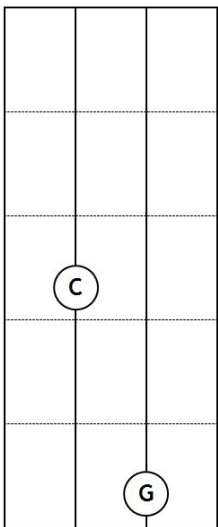
Major 3rd



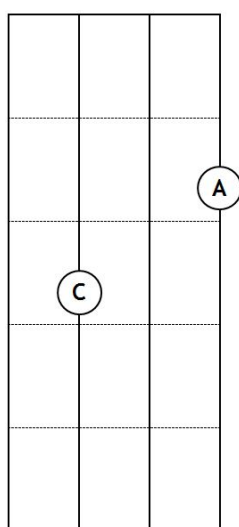
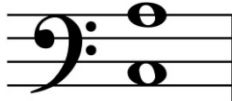
Perfect 4th



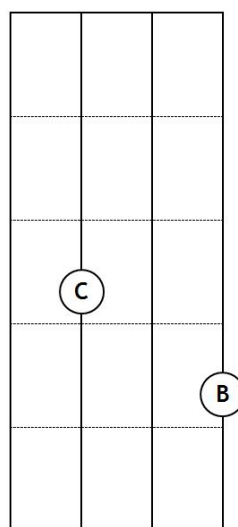
Perfect 5th



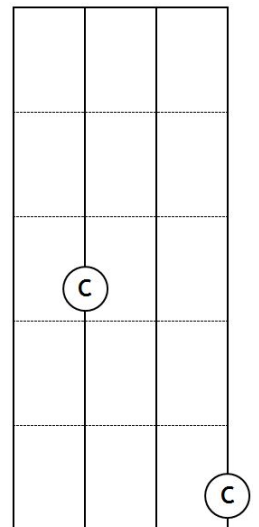
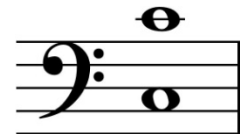
Major 6th



Major 7th



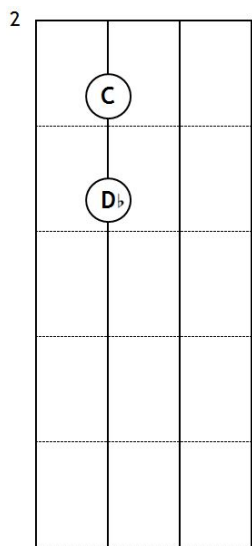
Perfect Octave



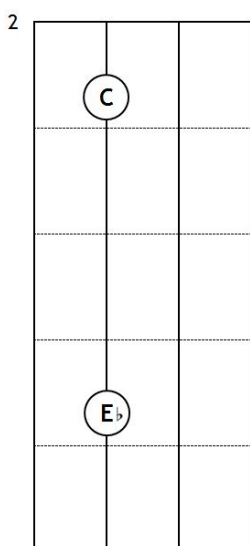
Intervals are shown on the staff and the bass fretboard with C as the bass note

Intervals: Minor, Augmented, and Diminished

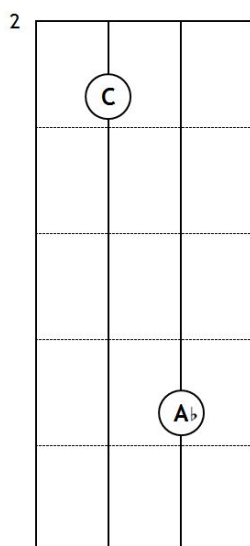
Minor 2nd



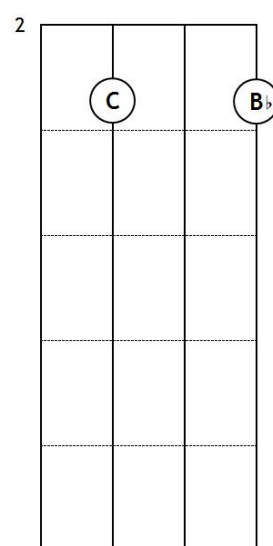
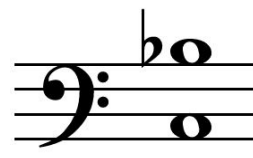
Minor 3rd



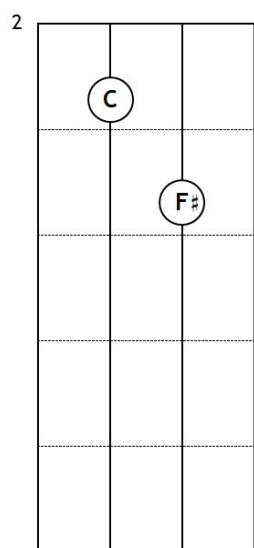
Minor 6th



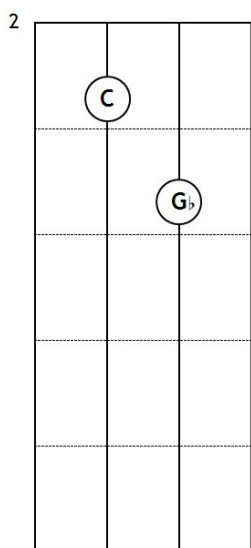
Minor 7th



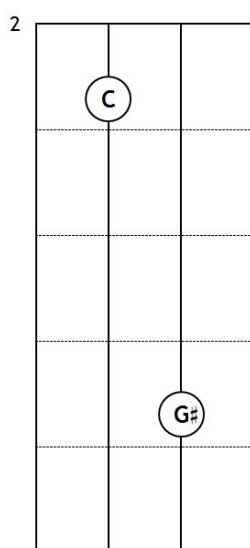
Augmented 4th



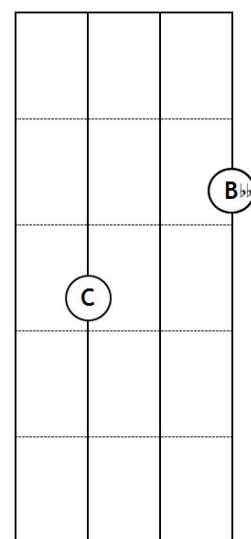
Diminished 5th



Augmented 5th



Diminished 7th



Intervals are shown on the staff and the bass fretboard with C as the bass note